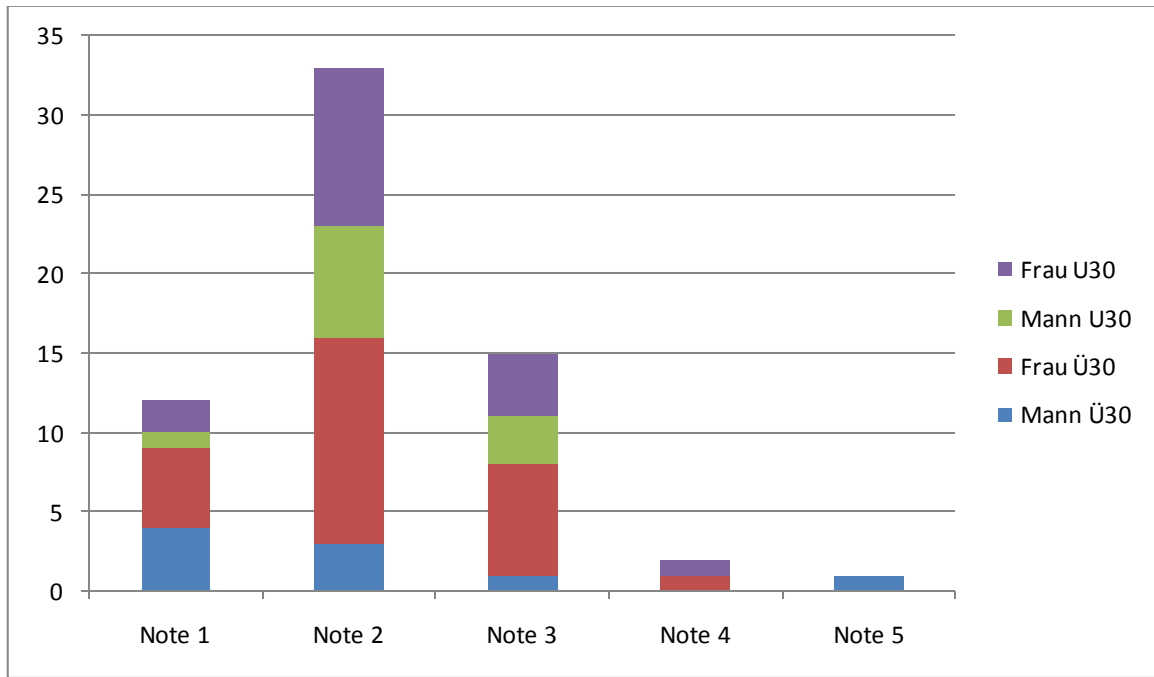
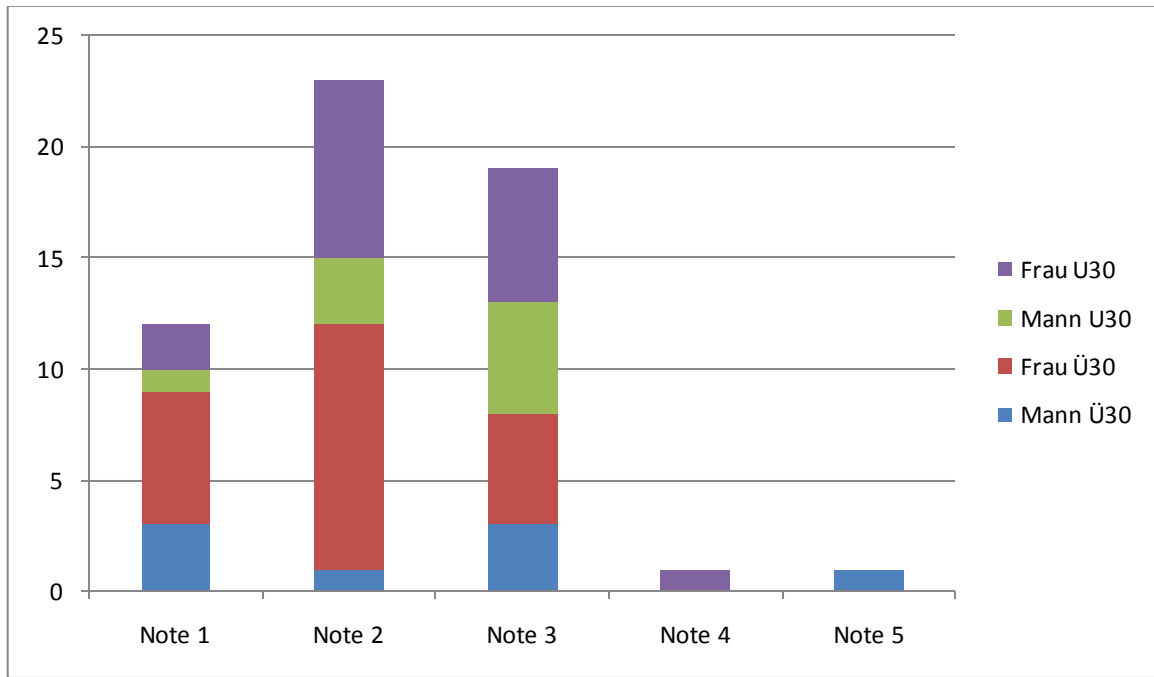


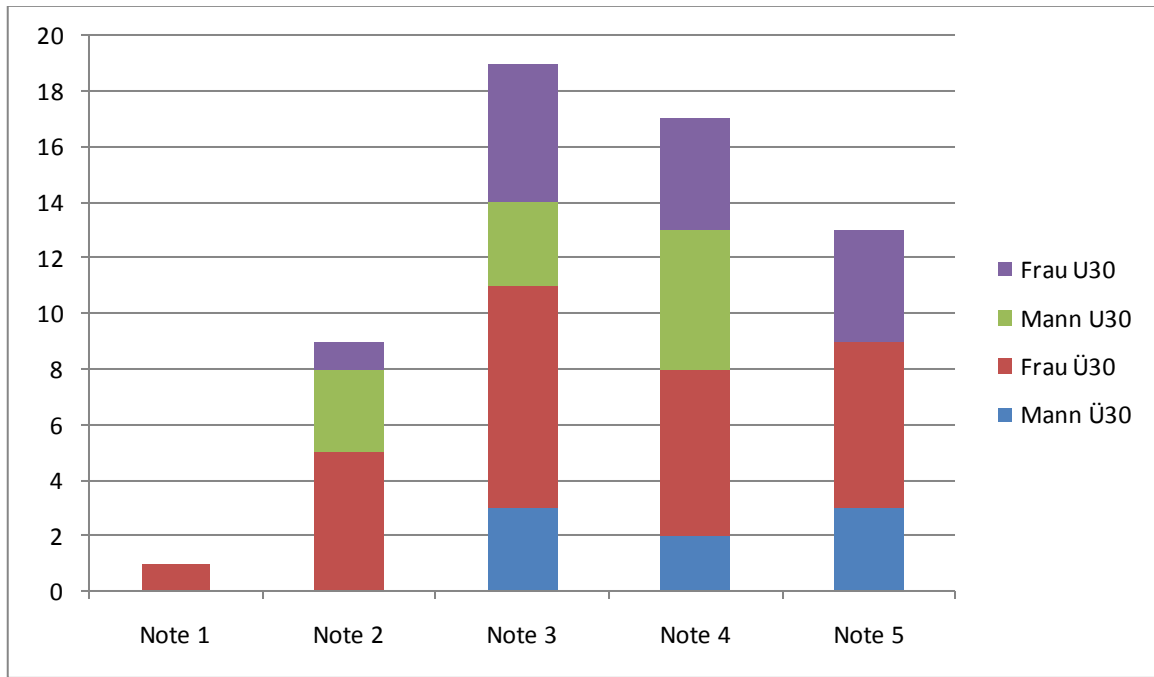
# Gemütlich/ ungemütlich



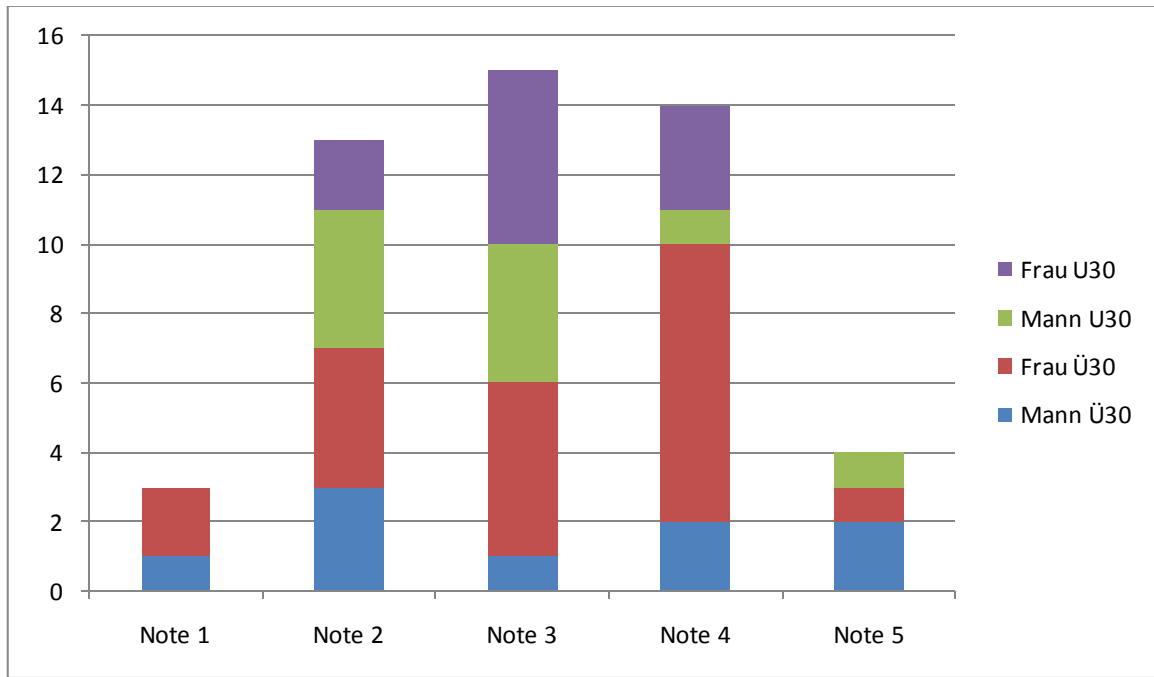
# Freundlich/ unfreundlich



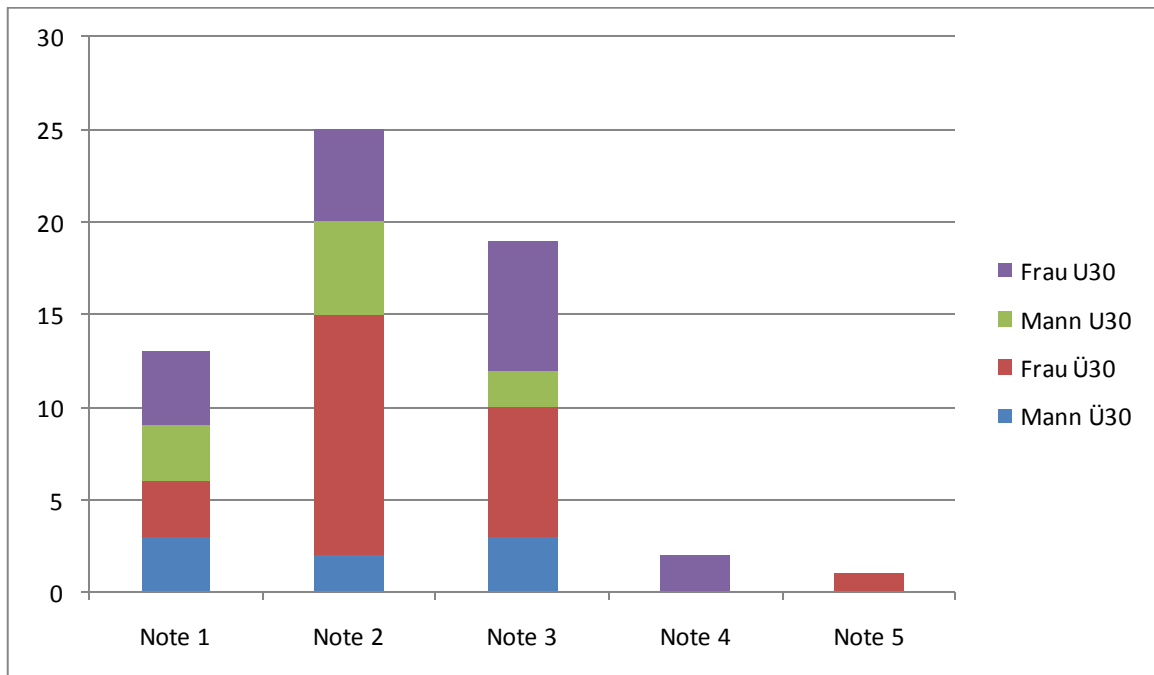
# Weltoffen/ spießig



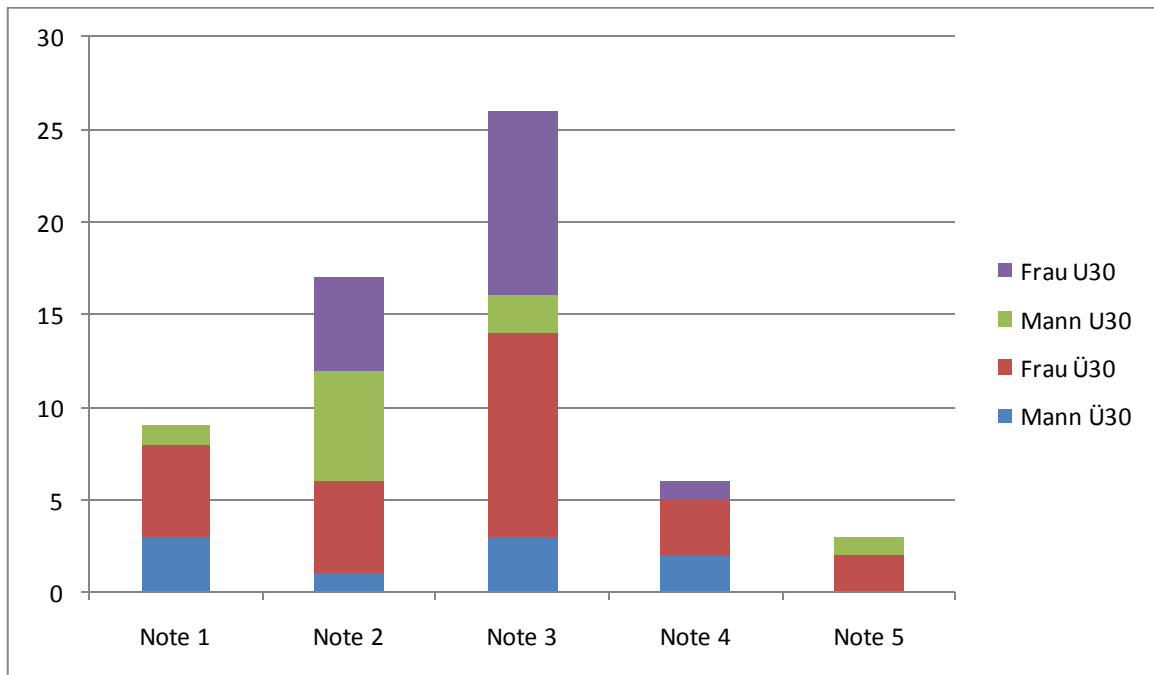
# Jung/ alt



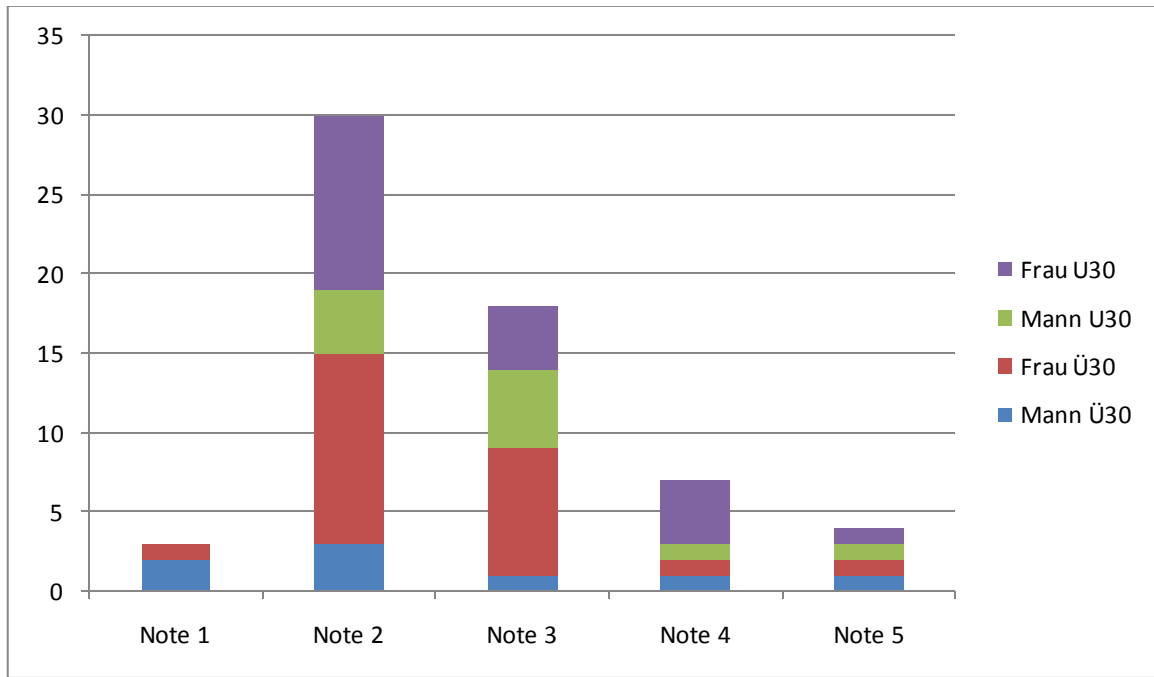
# Kinderfreundlich/ nicht kinderfreundlich



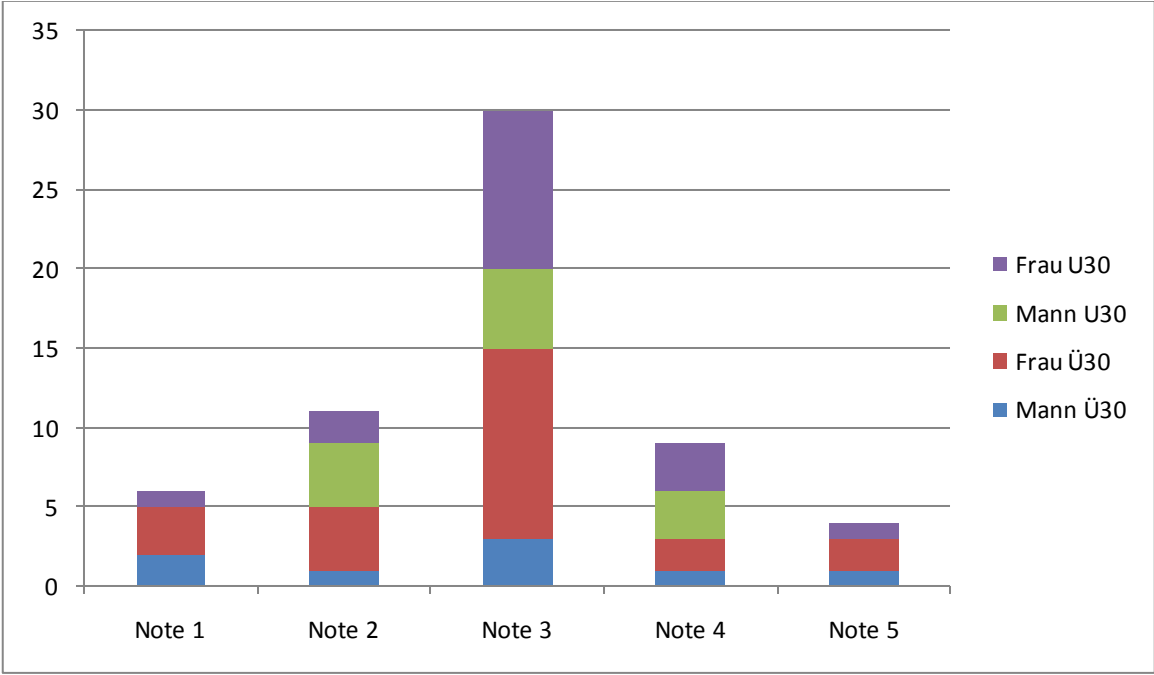
# Ausländerfreundlich/ ausländerfeindlich



# Sauber/ schmutzig

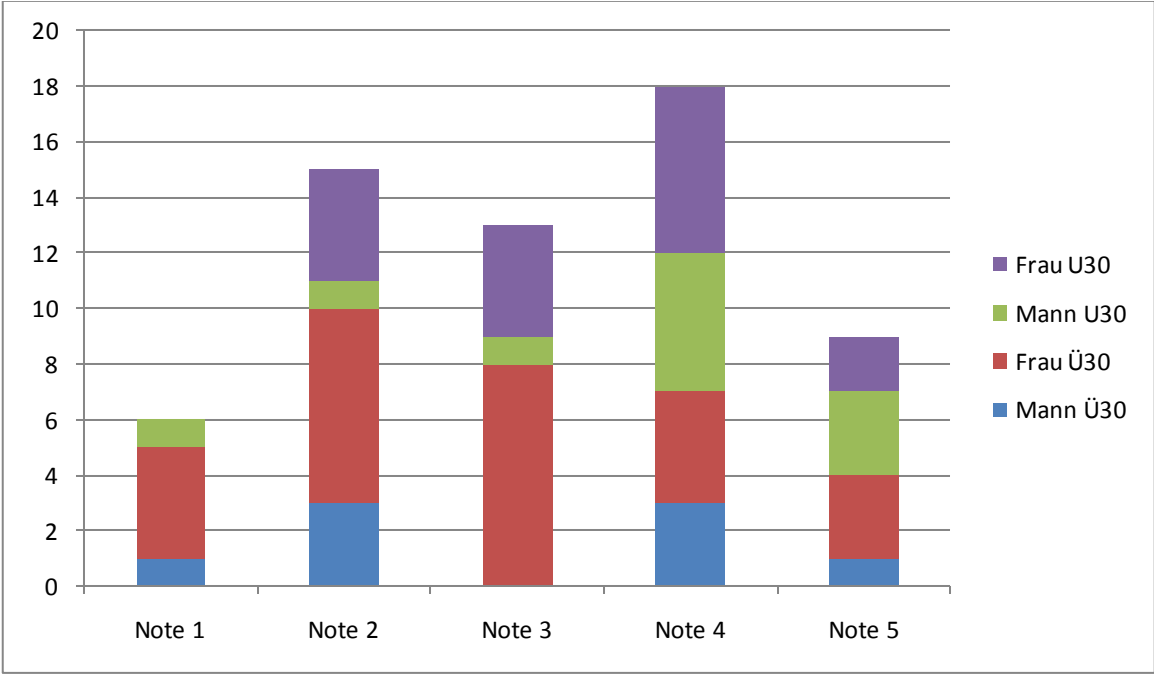


# Innovativ/ nicht innovativ

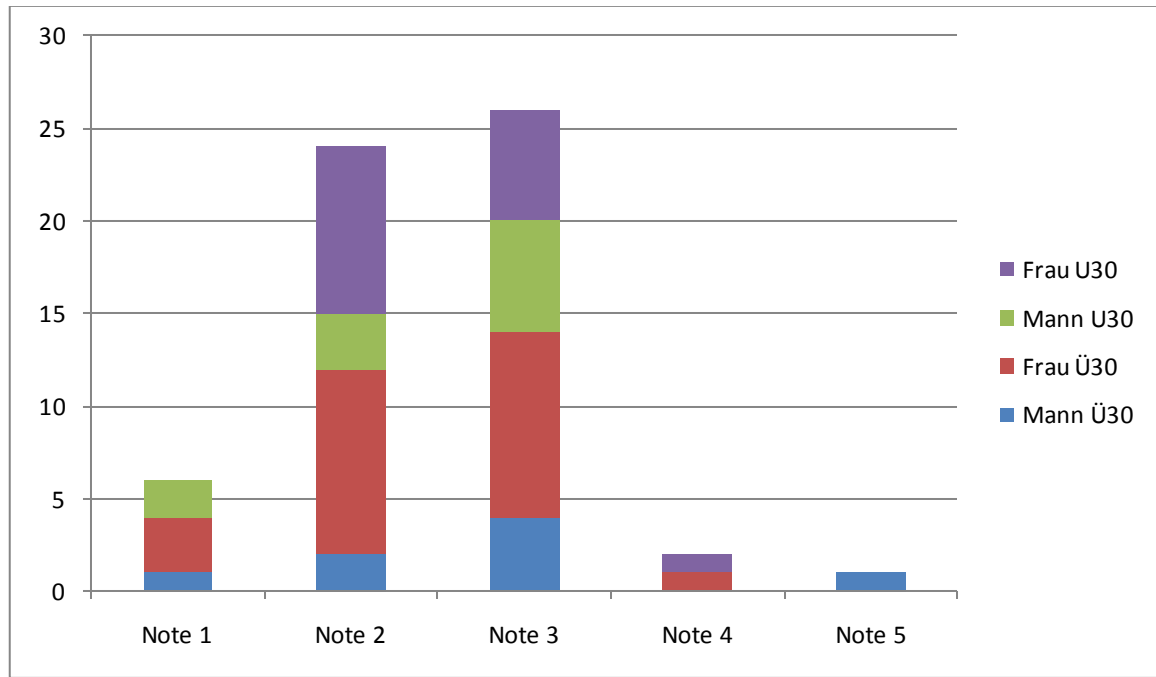




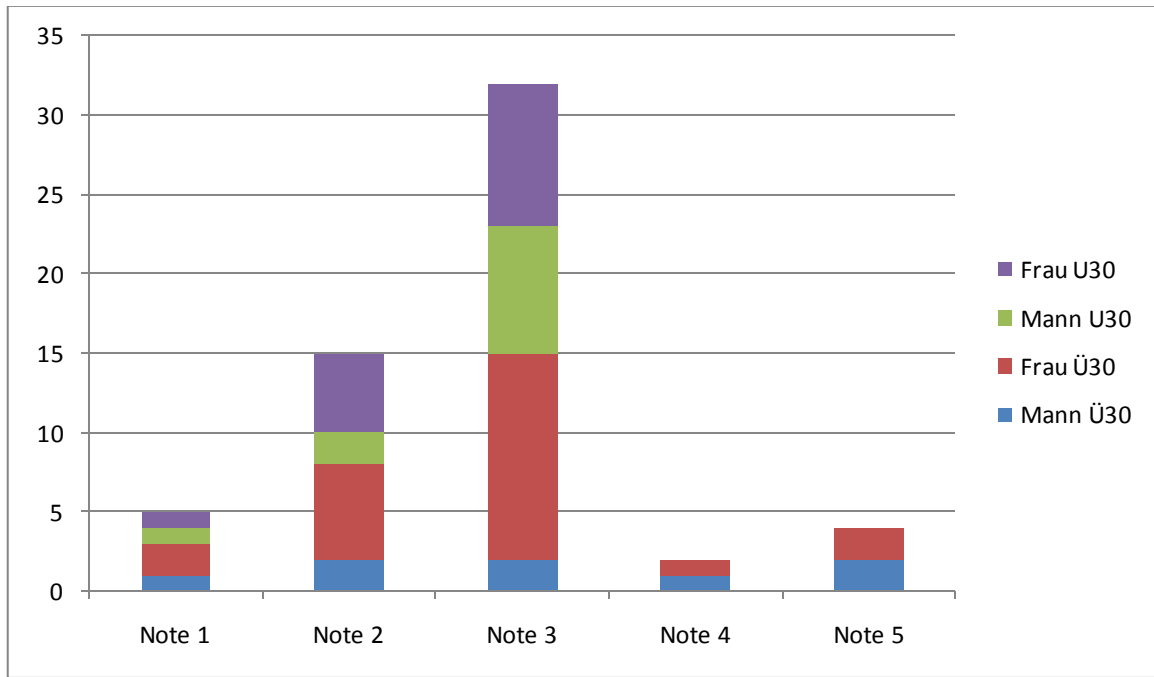
# Interessant/ uninteressant



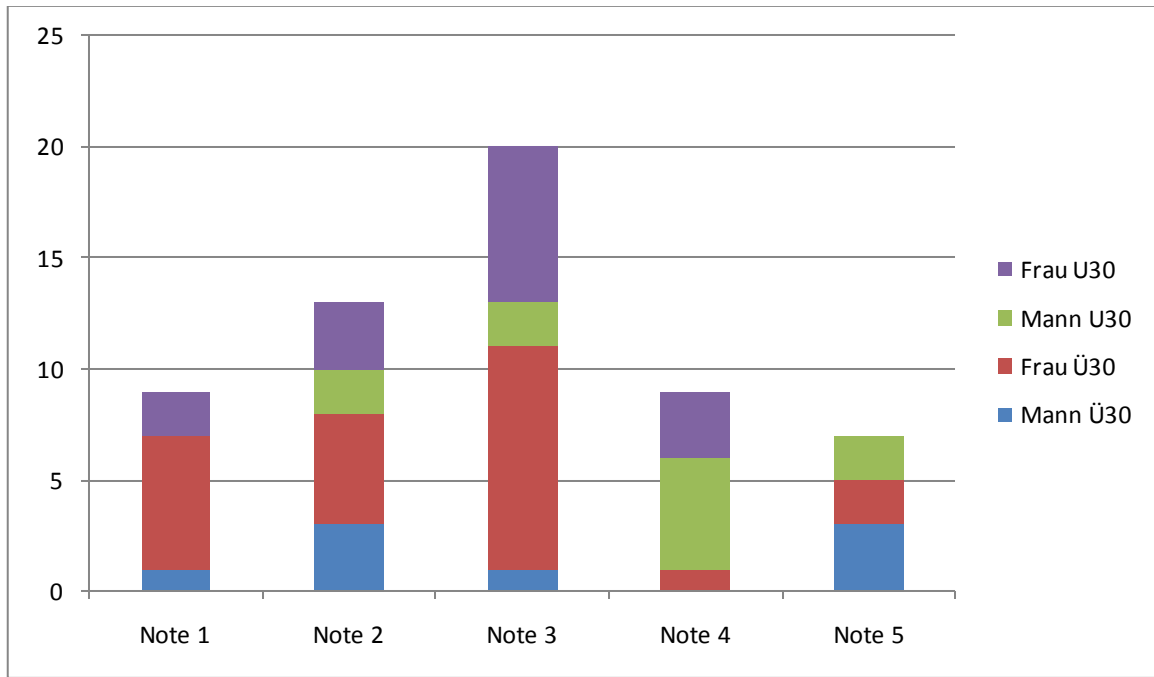
# Sozial/ nicht sozial



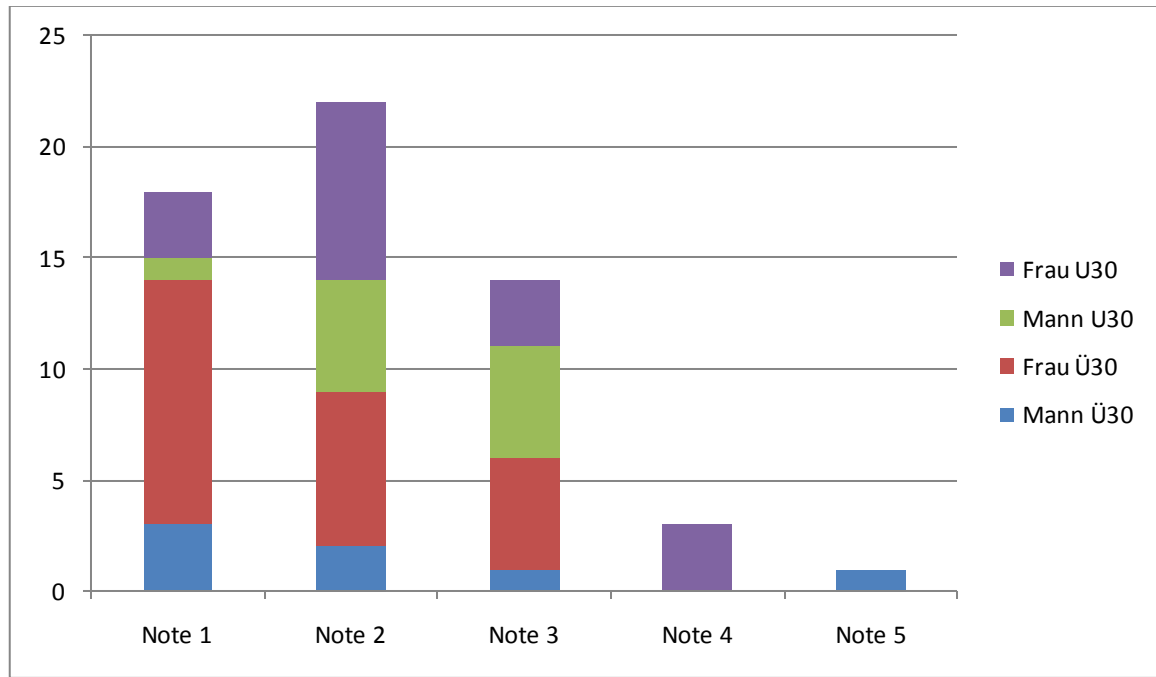
# Preiswert/ teuer



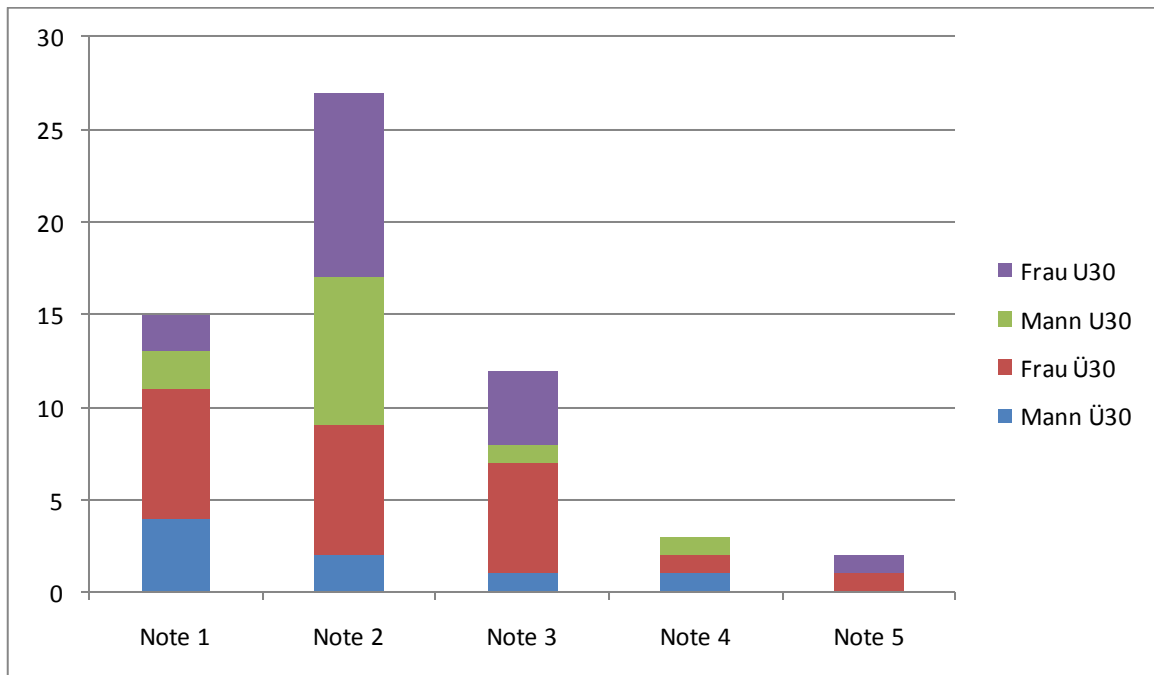
# Aufstrebend/ stagnierend



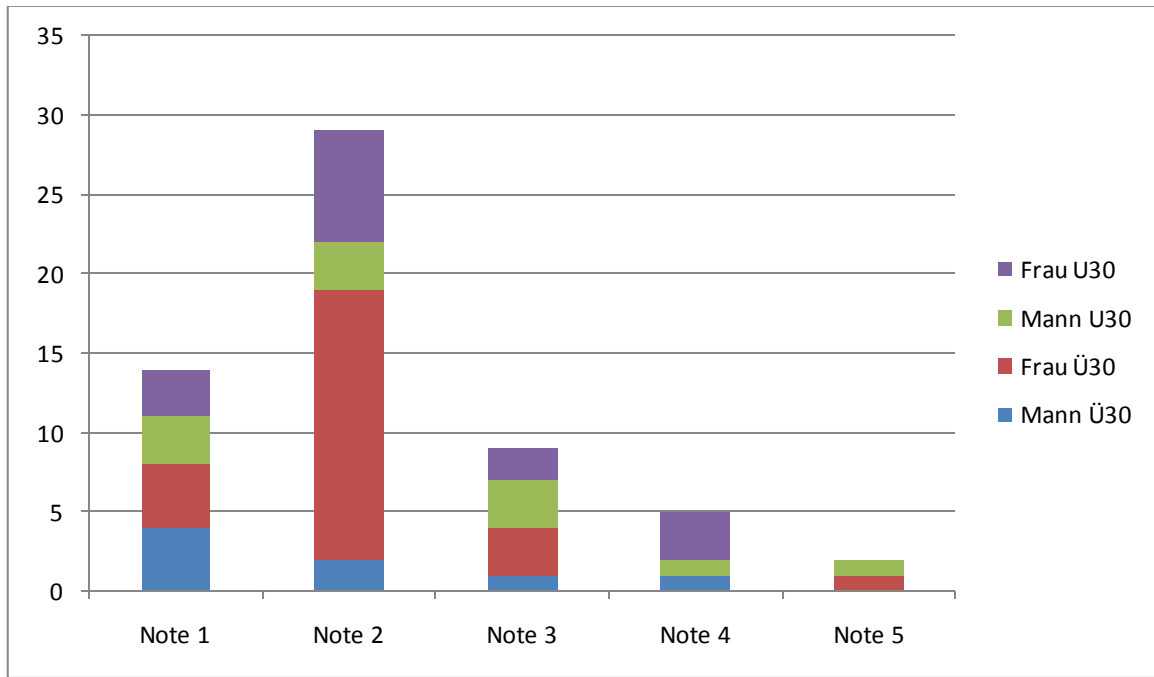
# Sympathisch/ unsympathisch



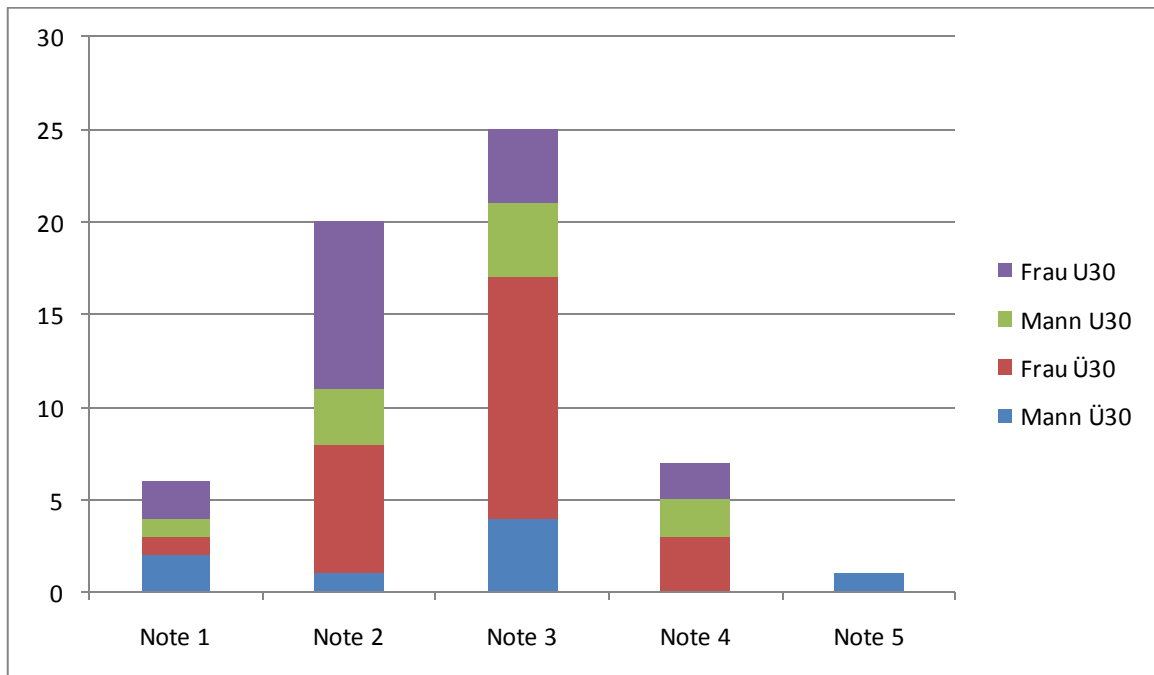
# Familienfreundlich/ nicht familienfreundlich



# Sicher/ unsicher



# Behindertengerecht/ nicht behindertengerecht





# Kurze Wege/ lange Wege

